

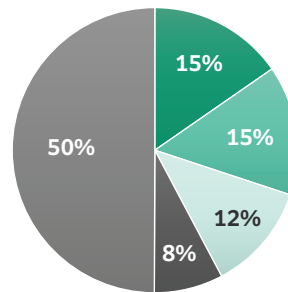
Whole Body Imaging



3D VASC-FSE 3 station

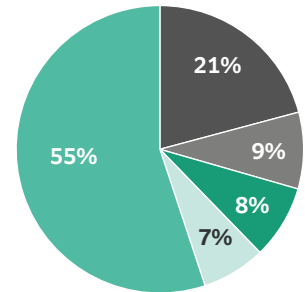
Over 50% of Cancer Cases are currently routinely unscreened.

Whole Body MRI screening may detect small cancers allowing the patient to seek early treatment.



New Cancer Cases, 2023

Breast	300,590
Prostate	288,300
Lung and bronchus	238,340
Colon and rectum	153,020
Other	978,060



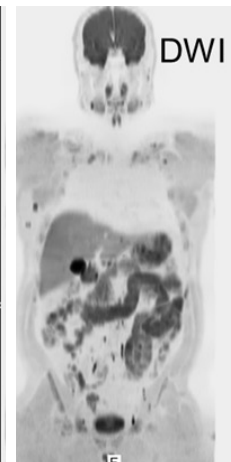
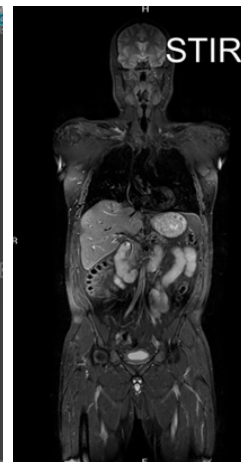
Cancer Deaths, 2023

Lung and bronchus	127,070
Colon and rectum	52,550
Pancreas	50,550
Breast	43,700
Other	335,950

<https://seer.cancer.gov/statfacts/html/common.html>



6' 5" Patient



Synergy Whole Body Eyes to Thighs: 3 Station
21 minutes total scan time utilizing A/B Blanket Coils

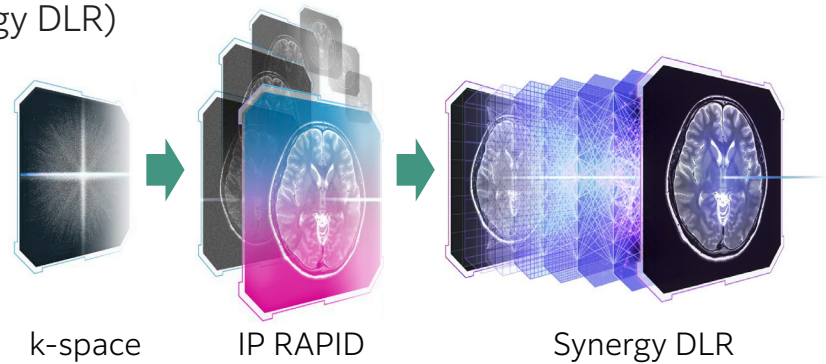
ECHELON Synergy

Next Generation 1.5T



Featuring Synergy DLR Deep Learning Reconstruction

Accelerated imaging (RAPID) and Deep Learning Reconstruction (Synergy DLR) reduce study times 50%+*



Advanced Imaging Platform for Capability and Growth

Field Strength	1.5T	High base uniformity and higher order active shimming for fat suppression
Gradient Capability	33mT/m, 130 T/m/sec	Image resolution and short scan times
RF System	32 channels	High sensitivity, Deep Learning Reconstruction and parallel imaging support
Accelerated Imaging	IP-RAPID, IterativeRAPID	Parallel imaging combined with noise reduction for fastest acquisition
Advanced Reconstruction	Synergy DLR, IP-Recon	Deep Learning Reconstruction reduces noise and enables shortest exams with excellent image quality